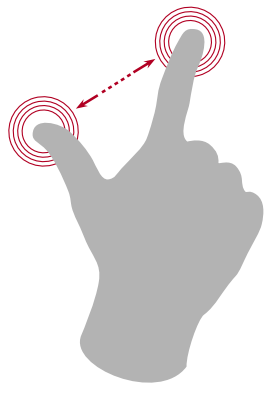


DHHRM MAP



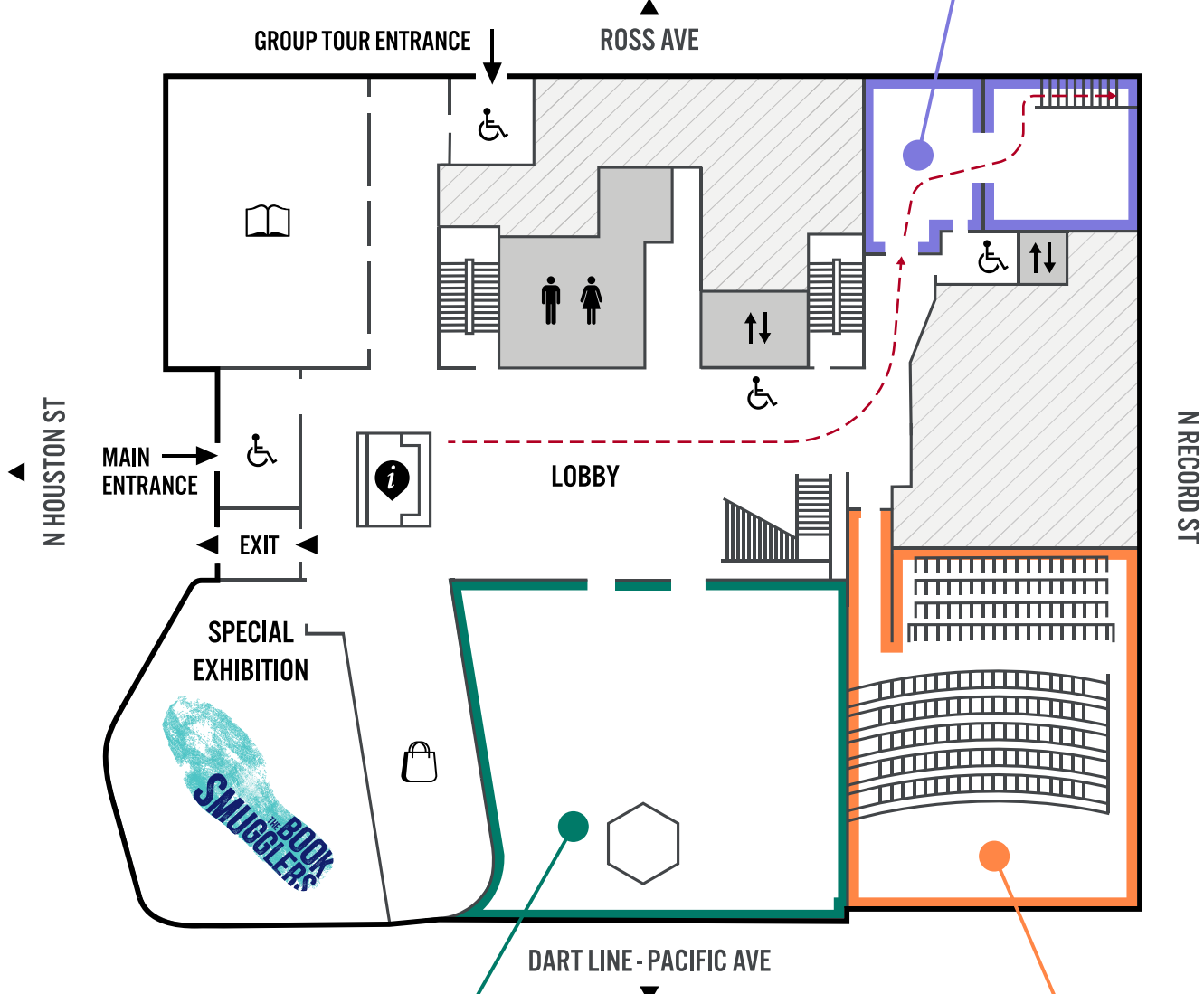
PINCH TO ZOOM

KEY	
	GUEST SERVICES DESK
	CLASSROOMS
	ELEVATOR
	MUSEUM STORE
	RESTROOMS
	ADA ACCESSIBLE
	OUTDOOR TERRACE

LEVEL 1

ORIENTATION WING

Visitors start in an intimate theater that prepares them for their exhibitionary journey. They are given fundamental questions to analyze during their visit: Why should they care about the Holocaust and human rights? What can they do? The Orientation Experience continues with an introduction to pre-Holocaust Jewish history and antisemitism.



COURTYARD

We are proud to have *This Place, Everywhere* (2019), a sculpture created by Texas artist James Surls, reside in the courtyard of the Dallas Holocaust and Human Rights Museum. Commissioned by Betty Jo and David Bell in memory of the Belzacki and Feffer families, the sculpture pays tribute to the six million Jews murdered during the Holocaust through each flower's six petals. In total, there are eighteen flowers, representing Chai, the Hebrew word for life. Eighteen eyes are also interspersed throughout the sculpture, facing upwards and downwards. By looking back and learning from the past and all that was lost, we can envision better lives for future generations.

CINEMARK THEATER

This 250-seat theatre features the latest state-of-the-art viewing environment with a wall-to-wall screen and 100% digital projection and sound. Visitors can watch exclusive footage of DFW Survivors' testimonies and mission-relevant films.

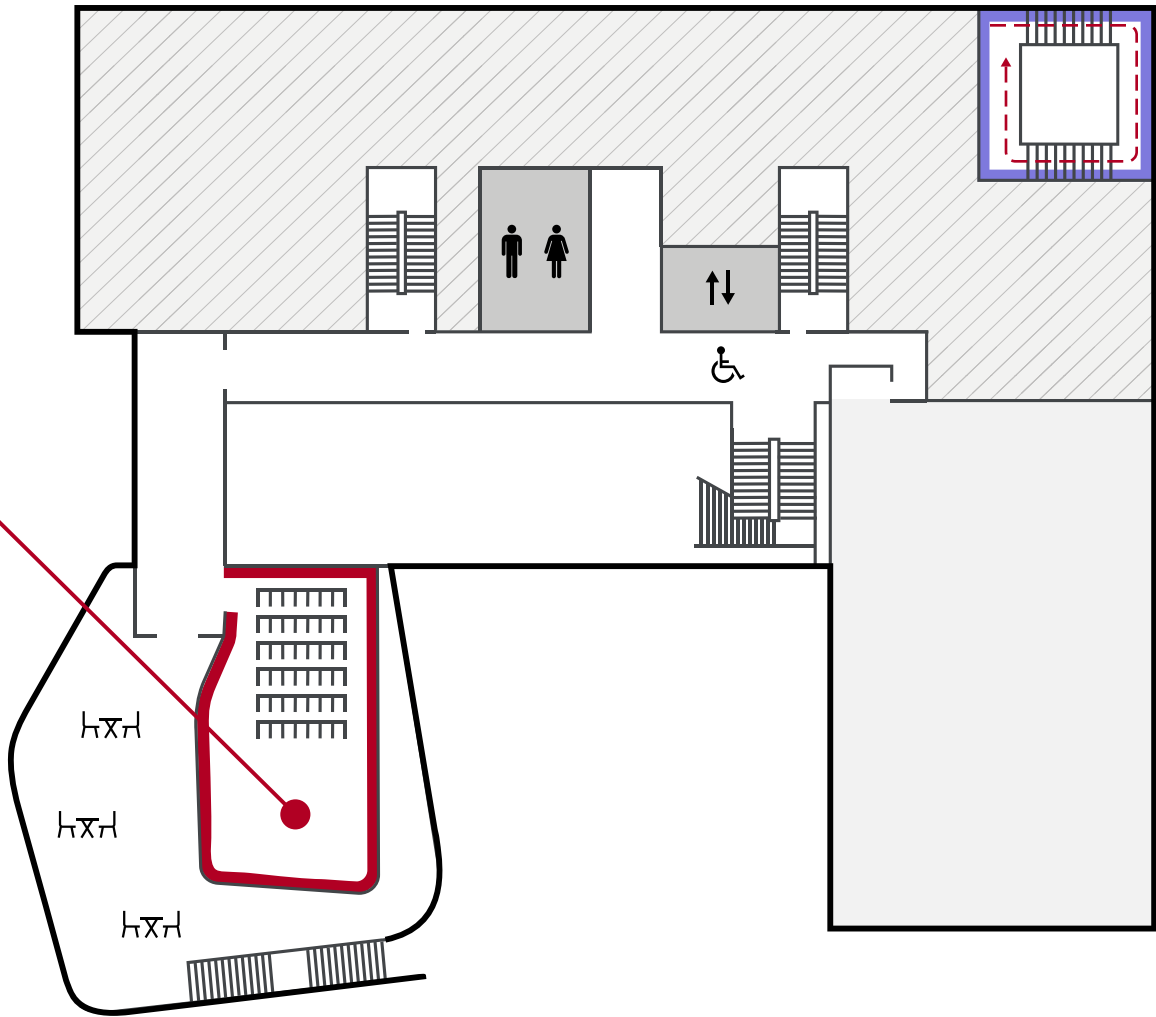
LEVEL 2

DIMENSIONS IN TESTIMONYSM THEATER

The Dallas Holocaust and Human Rights Museum is one of only two Museums in the world that features a permanent Dimensions in TestimonySM Theater. If you would like to visit the Dimensions in TestimonySM Theater, please visit Guest Services to receive your complimentary timed ticket.

Dimensions in TestimonySM is an initiative by USC Shoah Foundation that allows visitors to interact with Survivors in perpetuity. Using high-definition recording, voice activation, and holographic imagery, Dimensions in TestimonySM brings eye witness testimony to life, even after our Holocaust Survivors are of blessed memory.

Dallas Holocaust Survivor Max Glauben is one of 19 Holocaust Survivors who have been filmed for this project. Max's filming took place in the summer of 2018, when he answered more than 1,000 questions over five days of filming. This theater allows visitors to ask questions and interact with Survivors using artificial intelligence.



LEVEL 3

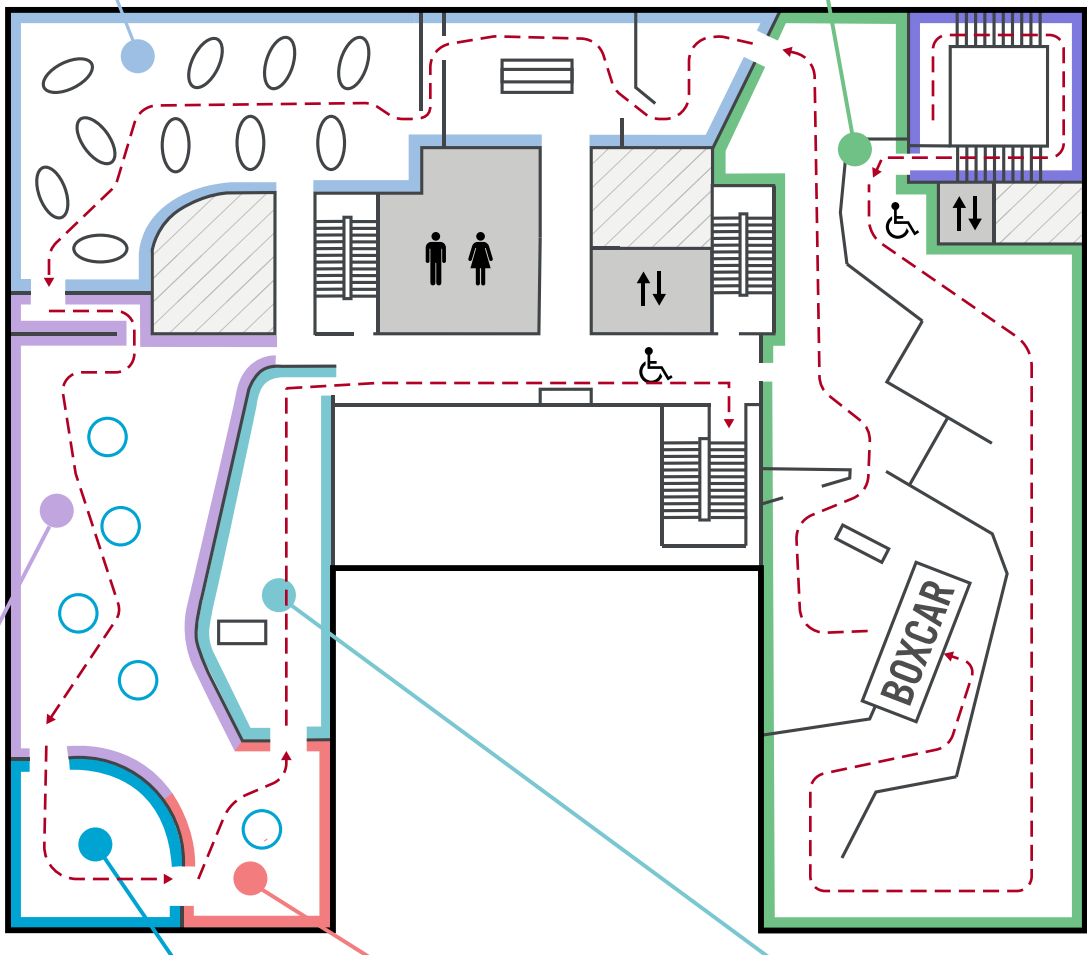
HUMAN RIGHTS WING

This Wing introduces representational justice implemented by the United States and its allies after World War II. Visitors walk through the Nuremberg Courtroom and proceed into the Human Rights Gallery. From there, guests journey into the Ten Stages of Genocide Gallery, where ten monumental art installations depict historical and contemporary genocides, each illustrating one of Dr. Gregory Stanton's Ten Stages of Genocide.

HOLOCAUST / SHOAH WING

Learn about the 3,000-year history of the Jewish people. Hear about the 2,000+ years of persecution they experienced that led to the murder of six million Jews during the Holocaust. Confront Hitler's worldview and the Nazi rise to power in Germany during World War II.

The Holocaust/Shoah (Hebrew for 'catastrophe') Wing explores the savagery of the Einsatzgruppen, their acts of individual murder and terror, followed by the events that culminated in the "Final Solution" and the industrialized killing of the Nazi death camps.



PIVOT TO AMERICA WING

Visitors learn about the history of civil rights in the United States and Texas. They explore our nation's foundational ideals and participation in the development of these ideals, their historical reality, and the repair process by which our ideals and reality are brought more closely into accord. Guests are able to curate their own Museum experience through interactive kiosks. This Wing highlights Upstanders who worked to reform laws for all citizens.

CALL TO ACTION

Stand up and take part in making a difference in your community.

THE MEMORIAL AND REFLECTION ROOM

Natural light flows through this room, which provides visitors an opportunity to remember and honor the Dallas-area victims of the Holocaust. It's a place to take time to reflect on your Museum journey before departing.

BEYOND TOLERANCE THEATER

The Beyond Tolerance Theater offers a forum for visitors to confront their own biases. In this interactive space, visitors learn about hidden bias and consider responses to it.